



QUILLIAM

Romulus Court
Brentford

- Chain Free
- Two Bedrooms
- Spacious Reception Room
- Private Balcony
- Separate Kitchen
- Bathroom with Separate WC

- Hot Water and Heating included in Service Charge
- On-site 24hr Security
- Short Walk To Brentford Station
- Local Amenities

£400,000

Leasehold





Property Description

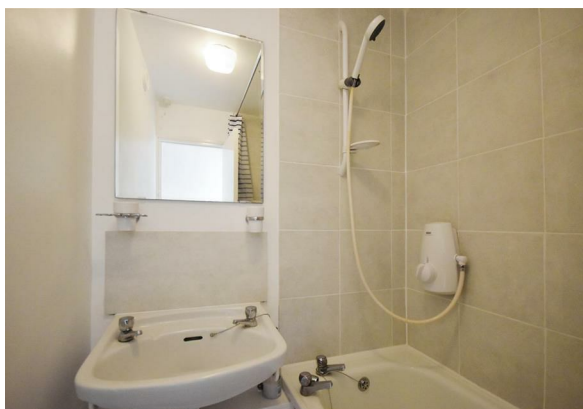
Quilliam are delighted to present this two-bedroom apartment located within the highly sought-after Brentford Dock development.

This spacious and well-presented property is arranged over two floors and benefits from its own private entrance. The first floor offers a bright and airy reception room with direct access to a private balcony, ideal for relaxing or entertaining, alongside a separate modern kitchen and two generously sized double bedrooms.

A well-appointed bathroom and separate WC provide convenience, while the central landing offers excellent flow throughout the home.

Set in the heart of Brentford Dock, the property enjoys the benefits of a peaceful riverside community with beautifully maintained communal gardens, on-site security, and close proximity to the Thames Path and Syon Park. Brentford Station and local bus routes are just a short walk away, offering excellent transport links into Central London and beyond.

An ideal home for first-time buyers, downsizers, or investors looking for a prime location with a strong sense of community



Accommodation

Reception Room
22'4" x 10'7"

Kitchen
15'5" x 7'10"

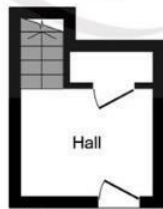
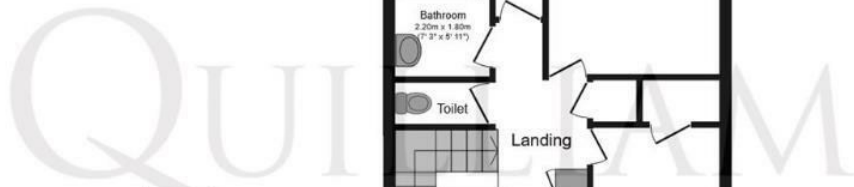
Bedroom 1
12'0" x 11'0"

Bedroom 2
12'3" x 8'10"

Bathroom
7'2" x 5'10"

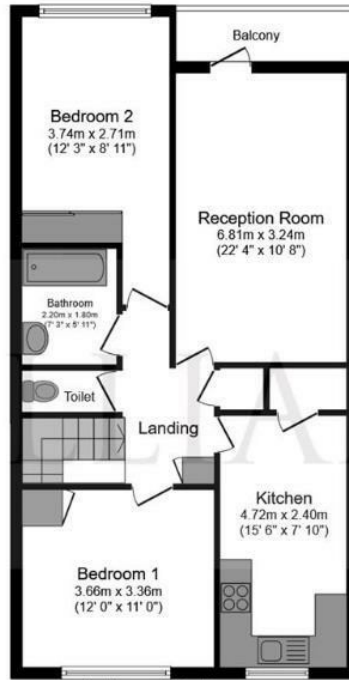
Balcony





Ground Floor

Floor area 7.4 sq.m.
(79 sq.ft.) approx



First Floor

Floor area 71.8 sq.m. (773 sq.ft.) approx

Total floor area 79.2 sq.m. (852 sq.ft.) approx

This plan is for illustration purposes only and may not be representative of the property. Plan not to scale.

Powered by Focalagent.com

Property Information

We have been informed by our Vendor of the following information:

Leasehold

Term of Lease: 999 years from June 2025 (approximately 998 years remaining)

Service Charge (approximately) £5,800.00 per annum

Ground Rent peppercorn for 2025/26 per annum

London Borough of Hounslow Council Tax Band: D

Council Tax Payable for 2025/26 £2,085.82 per annum

EPC - C

The annual Council Tax charge has been supplied in good faith and is for the period 2025/26. It will likely be reviewed and changed by the Local Authority the following year and could be subject to an increase after the end of March.



Energy Efficiency Rating		
	Current	Potential
Very energy efficient - lower running costs		
(92 plus) A		
(81-91) B		
(69-80) C	69	72
(55-68) D		
(39-54) E		
(21-38) F		
(1-20) G		
Not energy efficient - higher running costs		
England & Wales	EU Directive 2002/91/EC	

206 High Street
Brentford
TW8 8AH

020 8847 4737
info@quilliam.co.uk
<https://www.quilliam.co.uk>

Agents Note: Whilst every care has been taken to prepare these particulars, they are for guidance purposes only. All measurements are approximate and are for general guidance purposes only and whilst every care has been taken to ensure their accuracy, they should not be relied upon and potential buyers/tenants are advised to recheck the measurements